

ACROSS SYSTEM octo m



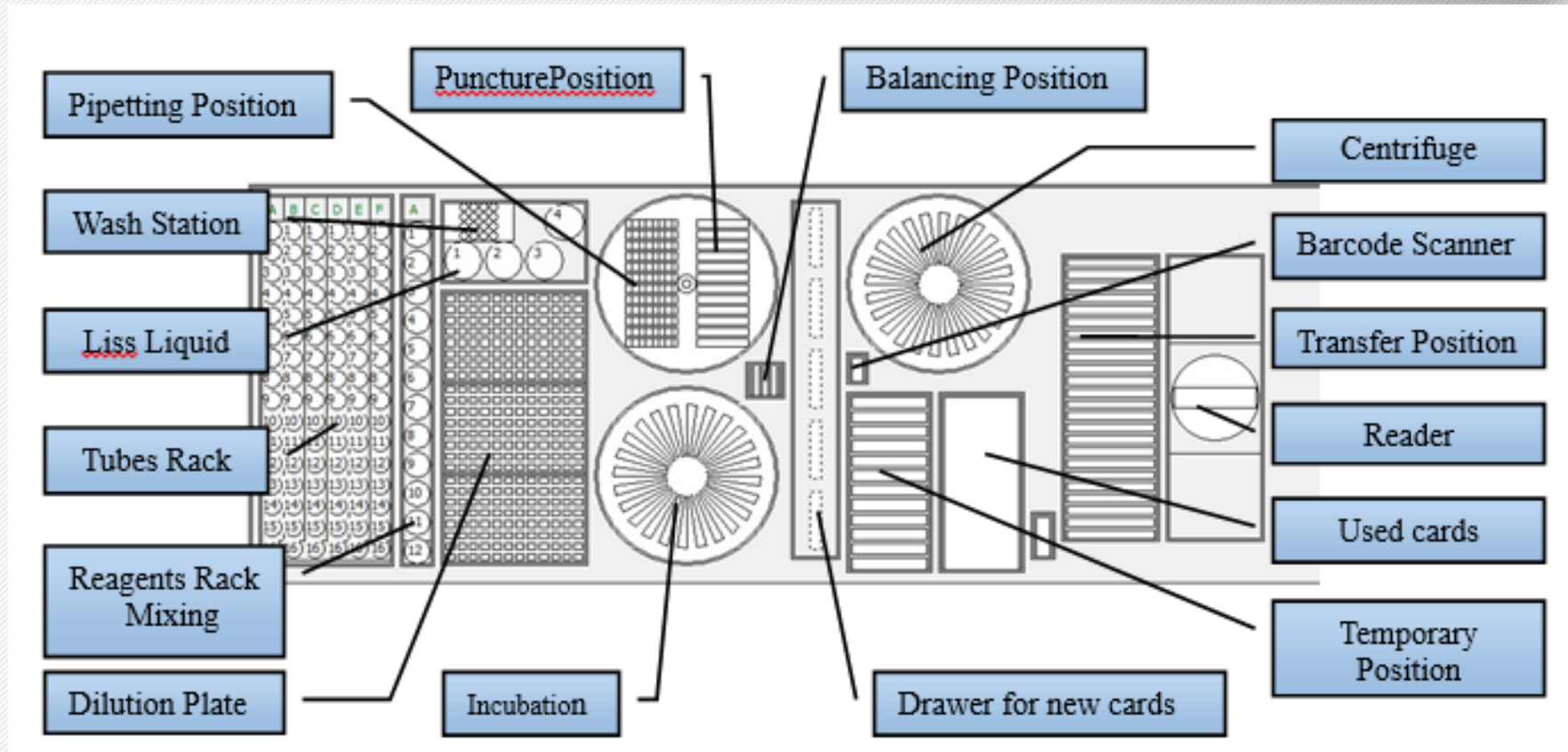
SERVIS TRAINING

Instrument Intended Use and Overview

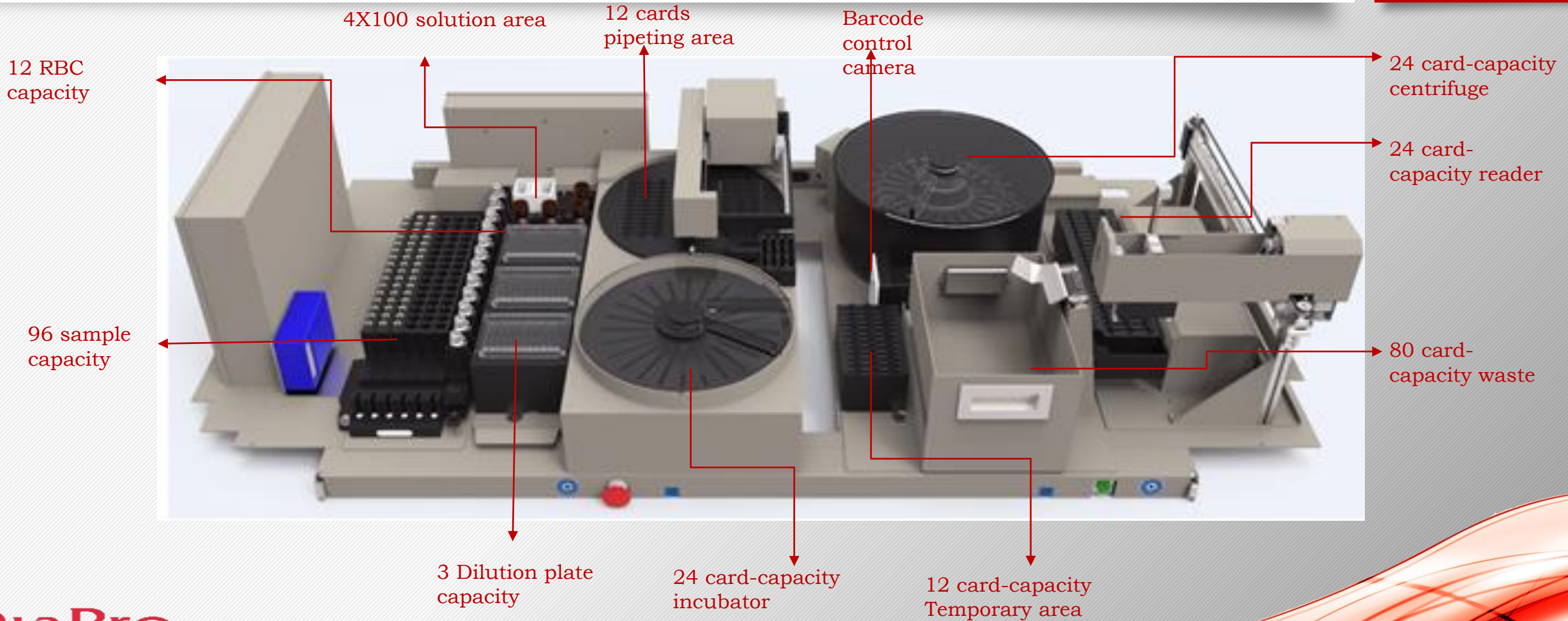


Automatic Blood Grouping System sets liquid distribution, incubation, reagent mixing, puncture, centrifugation, analysis and other functions, that required in analysis experiments, in one interpretation, with intelligent process optimization, to ensure the accuracy of the test results. It is intended to use for Reverse& Forward tests, Cross Match tests and Antibody screen tests based on Gel cards before Blood transfusion in Diagnostics laboratories.

Basic Function



Basic Function



Module Configuration

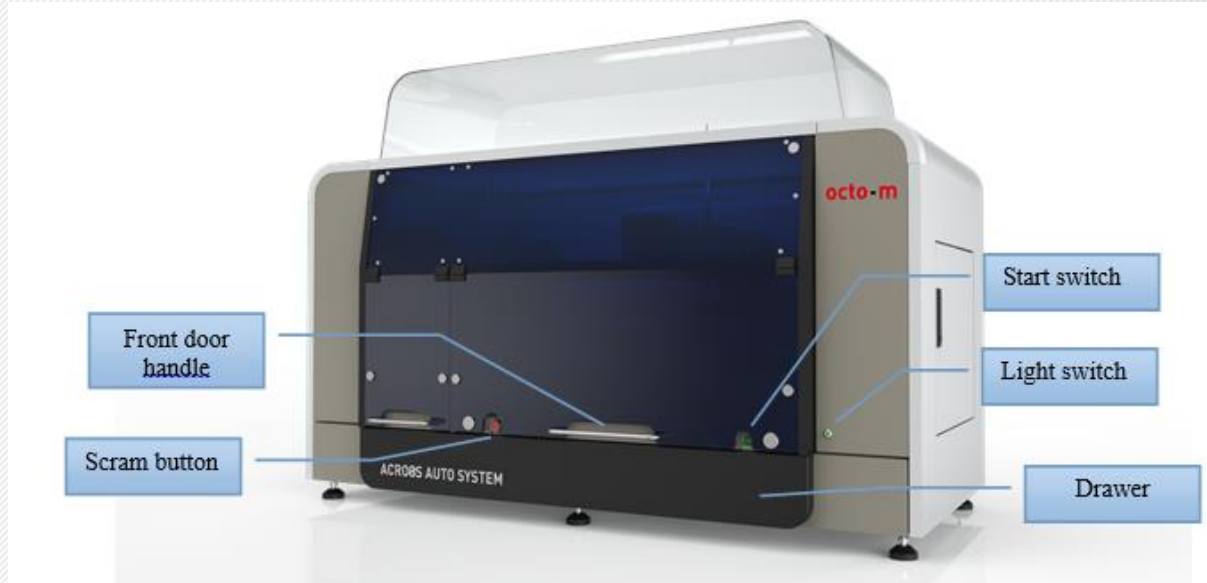


Automatic Blood Grouping System is constituted by 6 main modules:

- Pipetting
- Gripper
- Incubator
- Centrifuge
- Puncture
- Reader

Automatic Blood Grouping System size and weight

system
across



Model	Dimensions Length × width × height (mm)	Weight (kg)
Octo-M	1700×950×1170	225

Pipetting Module

Pipetting arm is located at the left side of working cabin, it mainly perform liquid dispensing as per the program that set by user. During operation, each channel of pipetting arm can flexibly run in X, Y, Z directions to perform liquid dispensing.

**it has two probes. at the same time, two sample pipetting.

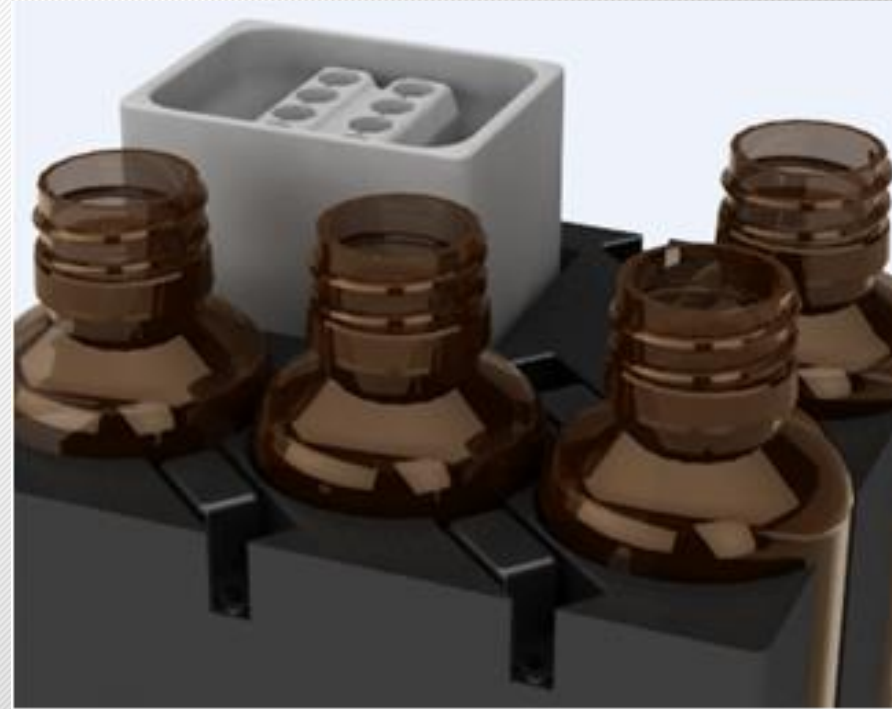
**the second probe may continue to operate with the first probe in the off state.

**it has a clot sensor.



Wash Station

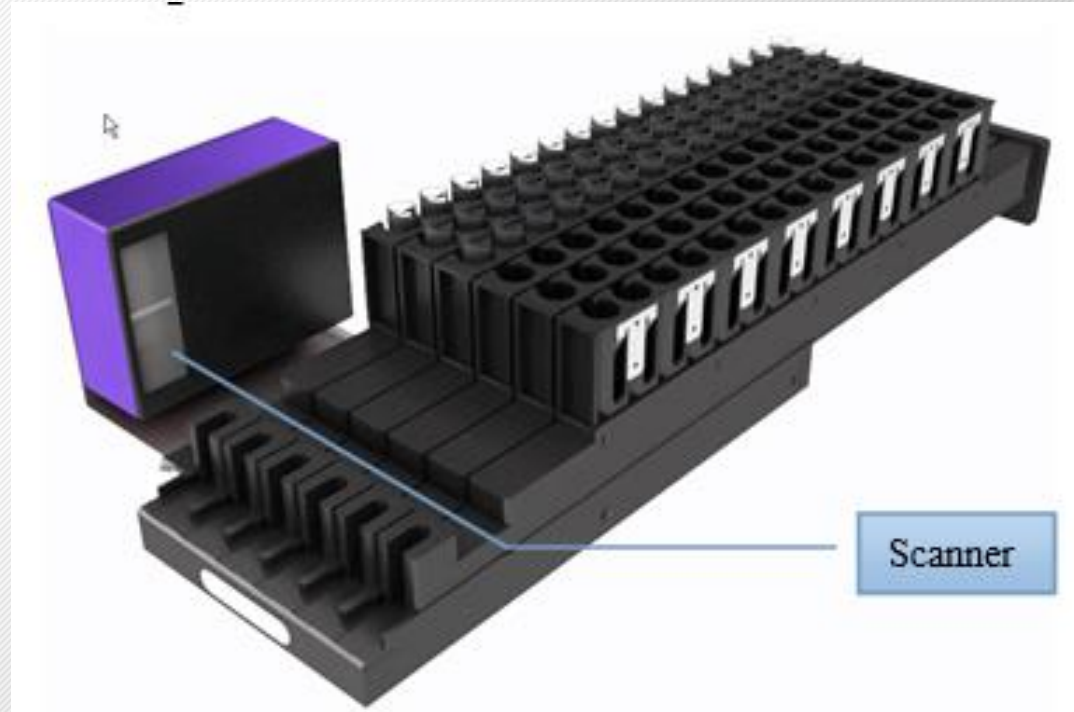
Multifunction washing station is set on the working cabin platform, with multi-washing mode, ensure the carry-over rate reducing to 10^{-7} (0.1ppm).



Tube Rack Scanning Module

Tube rack scanning module's main function is to place the specimen and scan the specimen barcode.

Specimen are placed in a single tube rack, each rack can be placed up to 16 samples. In the beginning of the experiment, the tube rack is pushed into the tube rack carrier one by one according to prompts; the scanner will automatically scan the barcodes.



Reagent Shaking Module

Reagent bottle will be placed on this shaking module to mix reagent. When pipetting is not performing, this module will shake to mix reagents; when performing, it will stop shaking and return back to balance to ensure well pipetting.



Drawer for New Cards



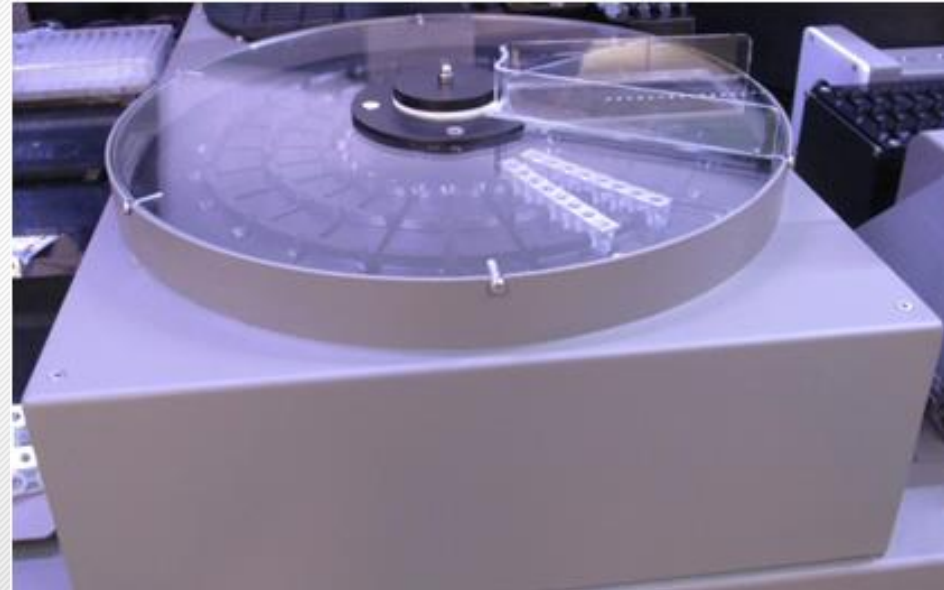
Before running test, user can open the drawer via control software to place new card in the drawer, and then close it. After starting test, the gripper will get the new card to scan, and then place on the puncture module.

Incubator

system
across

After liquid dispensing, the gel card will be incubating. Incubating temperature and time can be set via user software according to the reagent specification.

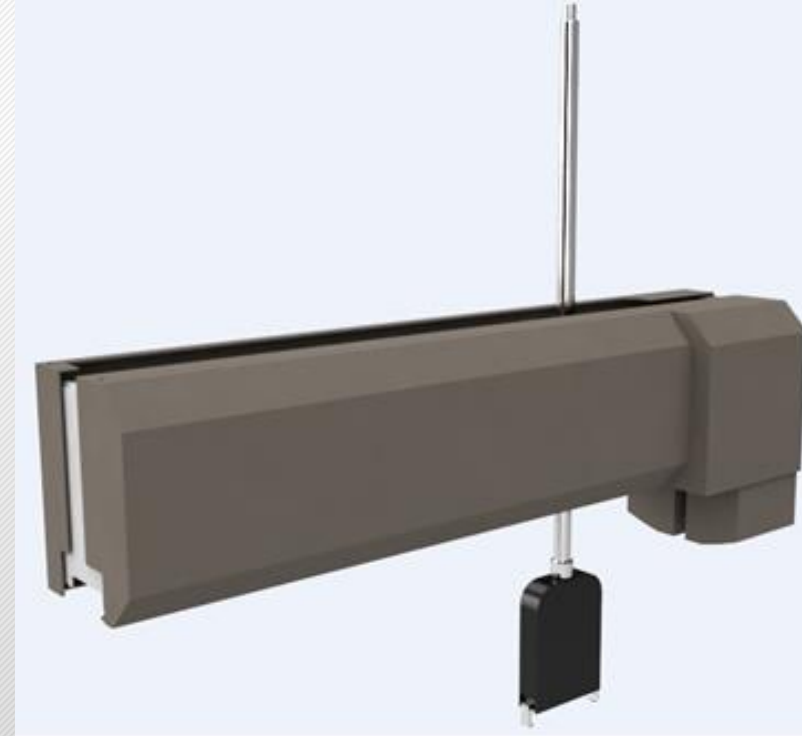
This incubator can place up to 24 gel cards at the same time. When the gripper holding a gel card gets to the incubator, it can auto rotate to an empty position to place this gel card.



Gripper module

Gripper is located on the right side of working cabin.

Main function of gripper is to transfer gel card from the drawer to incubator, centrifuge and then reader. Gripper can move in X, Y, Z directions, it can rotate in 270° at the horizontal direction to get the gel cards flexible.



Centrifuge module

The main function of this module is to centrifuge the gel card, in order to deposit the un- agglutination red blood cells in the bottom of gel card.

This module can hold up to 24 gel cards to centrifuge.

When centrifuging, gel card tray must be trimmed. User software can calculate based on the number of test sample, and grip the new card to make it balance.



Puncture Module

This module is to puncture holes on the gel card, in order that liquid can be dispensed into the gel card.

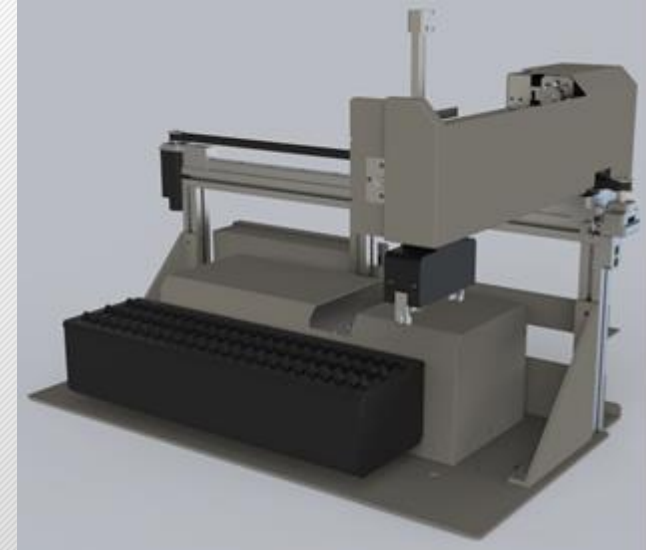


Reader

system
across

The reader of Automatic Blood Grouping System, is researched and developed by DiaPro, with high reading speed, high reliability.

Reader is to read reacting card and transport the results and the original image to the system database.



Weight Module

The weight module is for monitor system liquid, maintenance liquid and waste liquid volume. Three independent weight sensors measure weight of three bottles and transfer data to across system in real-time. When there is insufficient amount of liquid, a warning message is displayed.



Weight Module



SUPERIOR FEATURES

Octo-m Rh negative patients automatically have Reflex as a weak-Rh test function.

Weak-Rh tests have the function of studying automatically based on the sex and age of the patient.

Octo-m Antibody screening test has a function of titration test work as Reflex after test positive.

Octo-m has Revers A1 and B antibody titers for study function.

The octo-m can transfer card images to the LIS system.

octo-m warns if there is a difference in the results of multiple blood groups of a patient.

You can make a regional language change.

If desired, test results can not be changed

If desired, liquid minor antigen tests may be performed.

Sample card reagent loading can be done without stopping the device.

If desired, the reagent block may be cooling.

octo-m has immediate sample and priority sample feature.